

Caprice in C Major

for solo violin

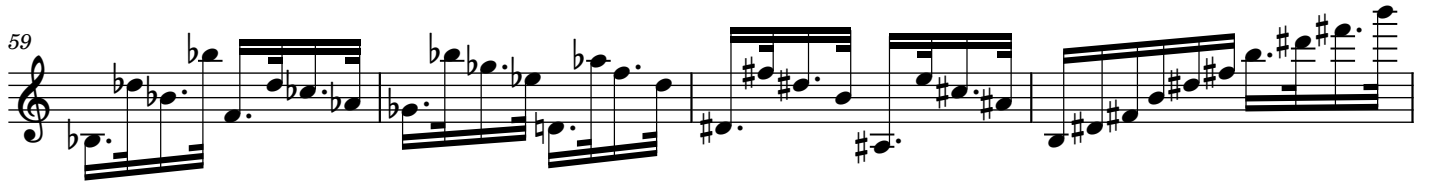
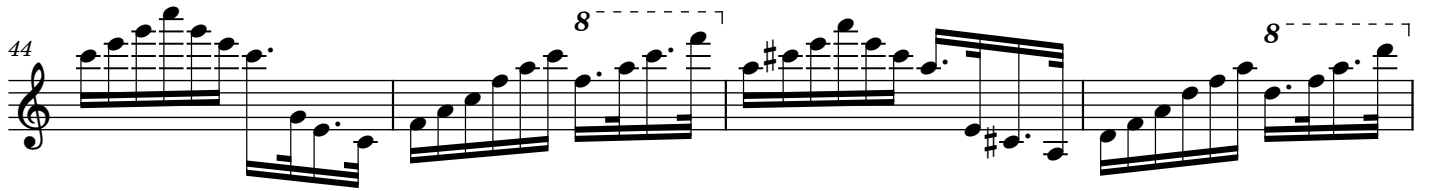
Niccolò Paganini
Op. 1, No. 11

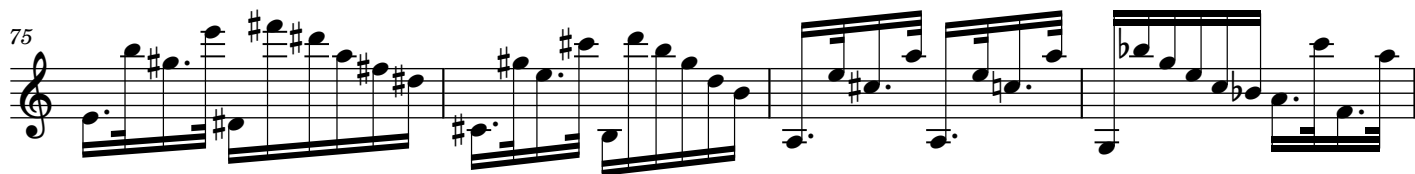
Andante

Musical score for the Andante section, measures 1 through 28. The music is written in treble clef with a 3/4 time signature. It features a variety of rhythmic patterns, including eighth and sixteenth notes, and rests. Trills (tr) and a quintuplet (5) are used for ornamentation. The key signature is C major. The piece concludes with a double bar line and a 2/4 time signature change.

Presto

Musical score for the Presto section, measures 29 through 40. The music is written in treble clef with a 2/4 time signature. It is characterized by rapid sixteenth-note passages. The tempo marking 'Presto' is present. Performance instructions include 'contro' (contratto) and 'simile' (simile). A sextuplet (6) and an octuplet (8) are used for rhythmic complexity. The key signature is C major.



**Tempo I**